

## LED strip 24V

### Luminent FLEX 900

LMNT-FX 900 37W/827/5M  
 LMNT-FX 900 37W/830/5M  
 LMNT-FX 900 37W/840/5M  
 LMNT-FX 900 37W/865/5M

### Luminent FLEX 900 Protected

LMNTP-FX 900 40W/830/5M IP65  
 LMNTP-FX 900 40W/840/5M IP65

### Luminent FLEX RGB

LMNTP-FX 300 47W/RGB/5M IP65  
 LMNT-FX 300 37W/RGB/5M  
 LMNT-FX 500 80W/RGB/5M

### Luminent FLEX 1400

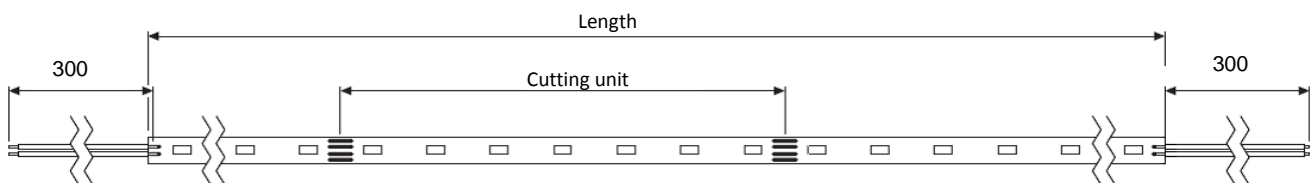
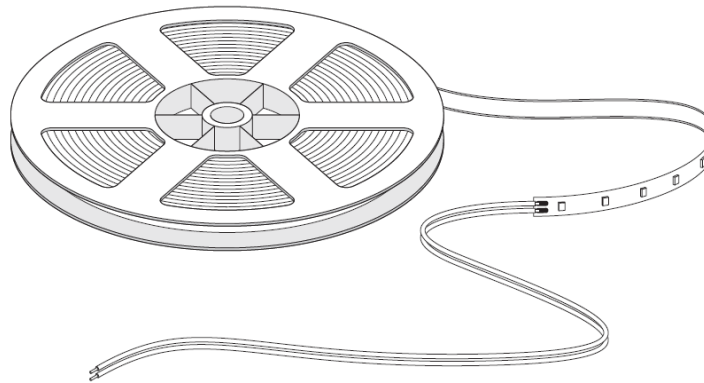
LMNT-FX 1400 52W/827/5M  
 LMNT-FX 1400 52W/830/5M  
 LMNT-FX 1400 52W/840/5M  
 LMNT-FX 1400 52W/865/5M

### Luminent FLEX 1400 Protected

LMNTP-FX 1400 54W/830/5M IP65  
 LMNTP-FX 1400 54W/840/5M IP65  
 LMNTP-FX 1400 54W/865/5M IP65

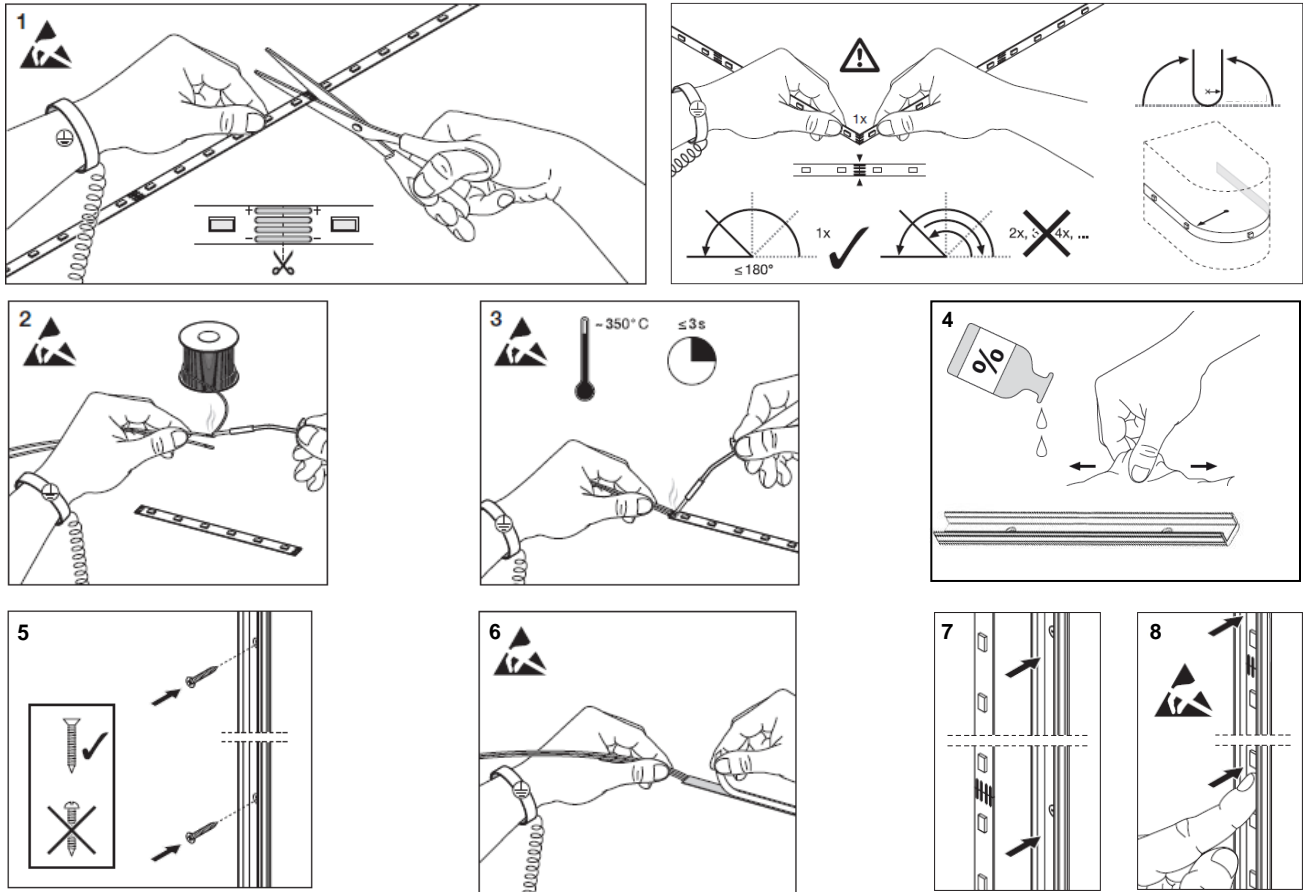
### Luminent FLEX special

LMNT-FX 1000 48W/830/5M  
 LMNT-FX 1000 48W/840/5M  
 LMNTP-FX 800 55W/830/5M MLK  
 LMNTP-FX 800 55W/840/5M MLK



Luminent FLEX	LED/m	W	VDC	ta °C	tc °C	Cutting unit	Length	Bending radius
LMNT-FX 900	60	37	24	-20...45°C	75°C	100 mm	5,00m	25mm
LMNTP-FX 900	60	40	24	-20...45°C	75°C	100 mm	5,02m	25mm
LMNT-FX 1400	70	52	24	-20...45°C	75°C	100 mm	5,00m	30mm
LMNTP-FX 1400	70	54	24	-20...45°C	75°C	100 mm	5,02m	30mm
LMNT-FX 1000	240	48	24	-20...45°C	75°C	25 mm	5,00m	30mm
LMNTP-FX 800 MLK*	120	55	24	-20...45°C	65°C	50 mm	5,02m	50mm
LMNT-FX 300 RGB	70	37	24	-20...45°C	75°C	100 mm	5,00m	25mm
LMNTP-FX 300 RGB	70	47	24	-20...45°C	75°C	100 mm	5,02m	25mm
LMNT-FX 500 RGB	85	80	24	-20...45°C	90°C	70 mm	4,97m	25mm

# luminent

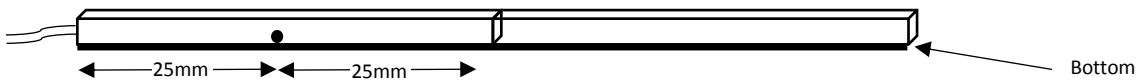


## WARNINGS

The LED strip should be driven by a SELV LED Driver with constant voltage output (24V DC). Mandatory, if LED Driver is not SELV type, then there is insulation distance and electric shock risk. Do not connect the LED strip to the LED driver while it is in the packing or wound onto a reel. Verify the temperature (tc is printed on the device) when the LED strip is covered or recessed into a surface (see Note below). Before bending the LED strip, verify the maximum permitted radius. Cut the LED strip only where mentioned by appropriate symbols. For IP 20 models, the solder pads of cutting end should be well treated to avoid short-circuited when clipped. For instance, wrapping by insulation tape.... For IP 65 models, the cutting end should be sealed with silicon glue and end-cup to maintain the waterproof function. Do not remove the tape from the LED strip; it can compromise the electrical insulation

**NOTE:** the tc point measurement for LMNTP-FX-800 MLK only:

tc point must be measured at 25mm from the cutting unit, 2 mm from the bottom on the tube's side face as mark below



## INSTALLATION

Remove the dark-yellow paper on double-sided tape on the back of LED strip. Mount the strip light by sticking the strip light onto the mounting surface. Before connecting the strip light to LED driver, respect the right polarity.

**NOTE:** LMNTP-MLK cutting instructions. Measure from the endcap; the modularity of the cutting length is mentioned above. Remove the dark yellow paper around the cutting area. Seek the cutting pads through the milky tube. Cut the LED strip and seal it with proper accessories (included).

OSRAM GmbH  
 Berliner Allee 65  
 86153 Augsburg  
 Germany

